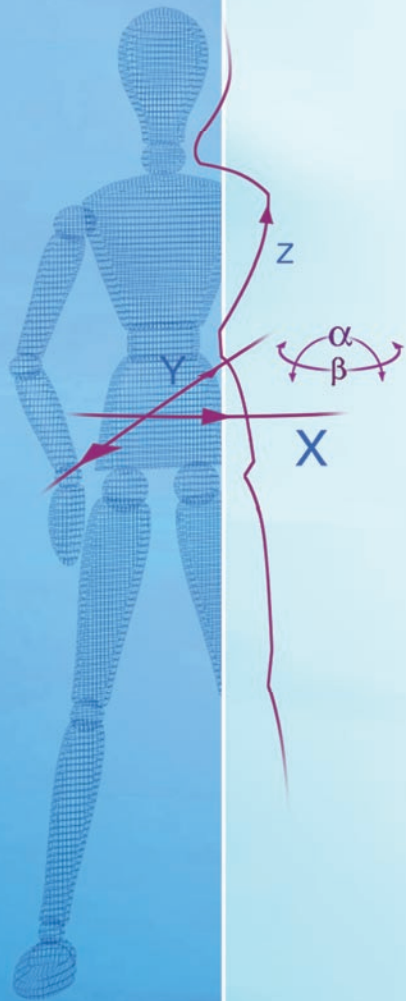
 Arco Ceil



ARCO CEIL standard

- Motorised vertical tube travel - Z movement
- Table tracking for several heights of fixed FFD
- Electronic magnet brakes for manual positioning

Ceiling rails	Standard 4000mm (3000 – 6000mm)
Carriage rails	Standard 4000mm (3000 – 6000mm)
Telescopic column	Soft start, high-speed motor driven operation
Vertical travel	1750 mm
X-ray tube holder	Standard holder fitting most X-ray tube housings
Control device	Ergonomically shaped handgrip with clearly marked digital display of FFD, tube angulation and tube rotation All brakes are controlled electrically The central beam position is indicated by laser
Weight	150 -190 kg without X-ray tube, collimator and rails Depending on model
Mains connection	115/230 V AC 10% 50-60 Hz single-phase 1,3 kVA
Ambient temperature	10 –40 C°
Ambient humidity	30 –75% relative humidity, non-condensing

Options;
Auto-positioning (Motorised movements)

- X and Y – Motorised movement in roof
- Alpha- Motorised tube angulation
- Beta- Motorised tube rotation

Other options;
Servo-tracking film device Chest stand with offset possibilities
Servo-tracking film device Table stand
Tomography without mechanical attachment
Pendulum

