

TS9600

Floor to wall (or ceiling) mounted tube stand

CE

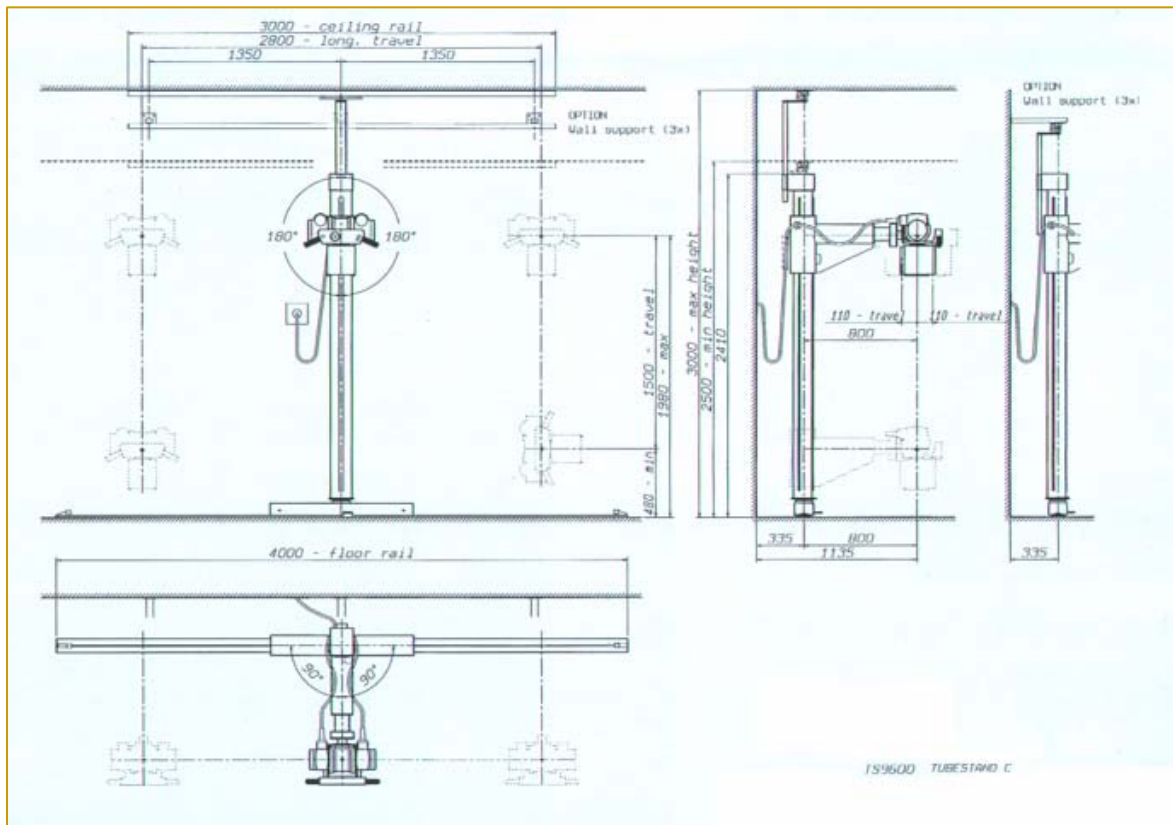


Description

The stand has been designed to support and move a radiogen assembly (RX tube and diaphragm). With the stand, it is possible to position the radiogen assembly as so to direct the radiant beam towards receptor devices such as a fixed or elevating and tilting table top bucky table, a stretcher, a wall bucky stand, a cassette changer, etc. Movements are manual and the mechanically balanced mobile parts are kept in parking position by electromagnetic brakes. For the movements, in-line electromagnetic brakes are used while, for the tube rotation movement on the horizontal arm of support, brakes at permanent magnet are used that assures the braking action—even in case of a sudden lack of current. The equipment is made with aluminum profiles with sliding surfaces of the mobile parts in chrome-plated steel. The equipment can be easily checked in each part so maintenance and inspections to keep its performance, safe use and reliability unchanged in the long run are made easier.

Technical features

| | |
|--|---|
| Longitudinal rail | |
| • Length | 400 cm |
| • Longitudinal travel | 280 cm |
| Column rotation | |
| • Angle of rotation | +/- 90° with mechanical detent in the orthogonal positions |
| • Unlocking rotational movement | foot pedal |
| Vertical | |
| • Focus to floor minimum distance | 48 cm |
| • Vertical travel | 150 cm |
| • Focus to film indicator | Adhesive scaled overlay (metric system) |
| • Balancing system | counterweights |
| Transversal | |
| • Focus to column vertical axis distance | 80 cm |
| • Transversal movement | +/- 11 cm |
| Tube horizontal rotation | |
| • Angle of rotation | +/- 180° with mechanical detent in the orthogonal positions |
| • Angle indicator | goniometer |
| • Locking of rotation | In every position with magnetic brake |
| Control board | |
| • Movements / brakes control | by handle bar / push buttons |
| Power requirements | |
| • Line voltage / frequency | 230 (220/240) V _{AC} 50/60 Hz |
| • Max. absorbed power | 300 VA (100W collimator lamp included) |
| Colours | |
| • Painted parts / adhesive overlays | RAL 9002 / grey |
| Weight | |
| | 110 Kg |
| Equipment identification | |
| • Classification according | class I - type B |
| • Typology of installation | permanently connected |
| • Working mode | continuous with intermittent load |
| Standard compliance | |
| • Safety | EN 60 601 |
| Operating environment | |
| • Temperature range | 10 °C ÷ 40 °C |
| • Relative humidity range (without condensation) | 30 % ÷ 75 % |
| • Atmospheric pressure range | 700 hPa ÷ 1060 hPa |



M.T. Medical Technology S.r.l. Via Friuli, 6/2 – 20046 Biassono MI

☎ 039 2494841

e-mail mt@emmetisrl.com

☎ 039 2499003

